

# "Tales of the Western Reserve"



## WRABA

### Western Reserve Artist Blacksmith Association

#### WHAT YOU CAN FIND INSIDE:

President's Letter	3
Affiliate Liaison Letter	4
Future Hammer-Ins	5
Monkey Wrench Tool	6-7
Past Hammer-Ins	8
Classifieds/ ABANA Scholarship Info	9
Nature of Metal details	10
ABANA 2012 Conference	11
WRABA Membership Renewal	12

#### UPCOMING EVENTS:

- APRIL 14 HAMMER-IN
- MAY 19 HAMMER-IN
- JUNE 23-24 WRABA CONFERENCE
- JULY 14 HAMMER-IN
- JULY 18-21 ABANA CONFERENCE
- AUGUST 4-5 WESTWOOD
- AUGUST 9-10 NATURE OF METAL ENTRIES

**Mark Owen Passed away** on February 3rd 2012. Mark was the "big fellow" that was always at the Burton festivals. He introduced his two boys (Mark and Gary) to blacksmithing and mentored them and many more. He joined the club in 2002. He was my right hand man at Burton Festivals, always there to set up and take down. He would be one of the first to arrive often ahead of me and the coffee was always on. He volunteered to demo for Heritage Days Celebrations at many towns in the area. He was a metalworking Merit Badge counselor for the boy scouts. He attended Jamborees, and instructed at merit badge sessions. He was always ready to help the younger generation into the world of Artist Blacksmithing. An unsung worker, he was a good friend and fellow smith who's smiling face will be missed.

Bob Temple

**Melvin Rose of Rose Ironworks also passed away** at the end of February at age 92. He was an important artist metal smith from Cleveland. Melvin Rose was the son of Rose Ironworks' founder, Martin Rose. Rose Ironworks was founded in 1904 and remains a family company. Melvin Rose was awarded the Cleveland Arts Prize Lifetime Achievement Award for Design in 2008. He was recognized for his contributions to design, stewardship of the over 100-year old company, and for the large amount of historical artifacts and records the company kept. They kept medieval wrought-iron artifacts and every sketch and work record from the company over its many years. Melvin Rose produced many architectural and interior metalwork for private homes. His public works include a railing for the Cleveland Museum of Art to match an earlier one, and a gate for the Western Reserve Herb Society's portion of the Cleveland Botanical Garden.

Here is a video of Melvin Rose from 2008:

<http://www.clevescene.com/scene-and-heard/archives/2012/03/05/rip-melvin-rose>



**President**

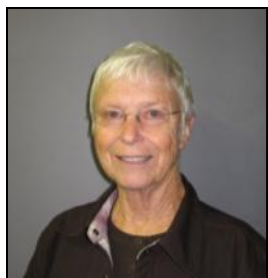
**Ken Tucker**  
Youngstown, Ohio  
330-792-9722

**Vice-President**

**Roy Troutman**  
Streetsboro, Ohio  
330-678-2013

**Secretary**

**Bruce Woodward**  
Madison, Ohio  
440-428-0822  
Woodwardiron1  
@roadrunner.com

**Treasurer**

**Linda Woodward**  
Madison, Ohio  
440-428-0822  
Woodwardla@hiram.edu

The Western Reserve Artist Blacksmith Association (WRABA) is a non-profit, educational organization, an affiliate of the Artist Blacksmith Association Of North America (ABANA).

We are dedicated to preserving and promoting the art and craft of hand forging iron. WRABA, our group of blacksmiths meet monthly to share information and techniques at the smithy of one of its' members or at Century Village in Burton, Ohio.

**A Membership application is on the back cover of this newsletter.**

**[www.wraba.com](http://www.wraba.com)**

Get information on our organization. Find out what is going on and take a look at some great pictures of what we've been doing.

The WRABA Newsletter is composed and written by the editor except as indicated. Material may be reprinted except as noted, with proper credit given. WRABA, its officers, demonstrators, writers, editor and members specifically disclaim any responsibility or liability for any damages or injuries as a result of the use of information published in the WRABA News or demonstrated at conferences or at meetings. Every effort is made to insure the accuracy and safety of all the information provided, but the use of any information published herein is solely at the user's own risk.

Deadline for articles to be put in the newsletter: March 15, June 15, Sept. 15, Dec. 15th (these dates are in the month prior to the issue coming out on the 1st)

**Editor**

Jeffrey Nau  
4922 Treeline Dr.  
Brunswick Hills, Ohio 44212  
[jeffrey@naufamily.net](mailto:jeffrey@naufamily.net)  
216-409-6291

**Board Members**

**Art Wolfe**  
Chesterland, Ohio  
440-729-0777

[artjudywolfe@sbcglobal.net](mailto:artjudywolfe@sbcglobal.net)

**Bob Temple**  
2013

Bristolville, Ohio  
330-889-3952  
[Drbobcatt@netscape.net](mailto:Drbobcatt@netscape.net)

**Marc Yanko**  
2012

Chardon, Ohio  
440-286-6059  
[mwyanko@hotmail.com](mailto:mwyanko@hotmail.com)

**Rocky Whitfield**  
2012

North Lima, Ohio  
330-549-3055

**Gary Barnhart**  
2013

Southington, Ohio  
330-898-8171  
[gbarnhart2@neo.rr.com](mailto:gbarnhart2@neo.rr.com)

**Don Pfaff**  
2013

East Rochester, Ohio  
330-525-7836

**Burton**  
Bob Temple  
Ralph Neumeister

**Fundraising**  
Bob Temple  
Art Wolfe

**Special Events**  
Bob Temple  
Roy Troutman

**Hammer-Ins**  
Roy Troutman

**Tips & Tricks Editor**  
Ralph Neumeister

**Committees**

**Membership:**  
Ralph Neumeister  
Bruce Woodward  
Frank Strock

**Scholarship:**  
Bob Temple  
Roy Troutman  
Lou Molvin

**Workshops:**  
Ken Tucker  
Roy Troutman  
Rocky Whitfield  
Bob Temple

**Website:**  
Jason Nass  
[me@wargoth.com](mailto:me@wargoth.com)

**Sunshine:**  
Art Wolfe

**Library:**  
Bob Brown

**Stores:**  
Mark Millhoff

## **President's Letter April 2012**

**Ken Tucker**

The sun is out, grass is starting to grow, shop is warmer. But cutting grass takes time form the shop.

Open Forge at Ralph's this winter has really worked out great, more people than I would have dreamed of, and thanks Ralph for hosting every week. If the weather stays nice we will be moving open forge back to century village on Tuesday nights. We have some work to do at Century Village to open up and clean up, getting ready for summer and our conference in June. I think we have a great demo, Bob Patrick. If you want to learn to forge weld, this is the guy to learn from. I have seen Bob demo a few times and he keeps the interest going. So pass the word and invite friends to come along with you.

This is your club and blacksmithing can cover a wide range of styles of work. If you would like to see something different at the hammer ins, call me or talk to any of the club officers and let them know what type of demo's you would like to see.

Thanks  
Ken



**The Artist's Blacksmith Association of North America***Spring 2012*

*"The Bridge Anvil" is the Affiliate Newsletter from ABANA to better enhance and "Bridge" the continuing relationship between ABANA and its Affiliates. The goal is to better forge a future for the blacksmithing community through constant communication, discussion, and sharing of ideas.*

### **Nothing but the truth...**

ABANA Has NOT done enough to assist the Affiliates over the years. I know this first hand because I was the President of one for several years. There have been some great ideas and changes that never quite got off the ground in the past. Challenges within the limited budget, board involvement, and hard feelings from the past have all affected the relationship on both ends. That being said, this ABANA Board spent a long time at the last board meeting having a very honest discussion about this very thing. At the end of the discussion there was a unanimous and very resounding proclamation to begin a rebirth of this extremely important relationship. Things have been coming together to make some opportunities open up to better serve you. Let me point out a few things:

We have a new editor of the Anvil's Ring; a former Affiliate editor who recognizes the importance of the Affiliates and their representation in our publications. I encourage your event planning to entail someone to take some high resolution photos and write a report on it. It is time you get the credit you deserve for your awesome regional events in one of our publications.

With the savings in our budget, due to the editor change, there is some much needed review and research happening with our grants FOR Affiliates and individuals to help you do what you do best. As soon as this is ready we will put the call out!

With the renovations going on with the ABANA website there is research going into the possible creation of a secure area for editors to share newsletters and get the newsletter exchange back up and running online to combat the rising prices from the Post Office and the existence of so many worldwide Affiliates.

This leads me directly into exciting news on both the Bealer and Humble Awards. The committees are putting forth new procedures to open up the doors to suggestions from the Affiliates to better search out the MOST deserving members in our collective ranks. There will also be another press release concerning the details of this in the coming weeks. It is on the board's table and currently being reviewed for approval.

The ABANA Board has been taking a "best guess" approach with Affiliate Relations. It has been a broken system. I am encouraging each Affiliate to designate a "Liaison" to join an off-board Affiliate Advisory Committee to review and suggest ways ABANA can serve you better. There is no better way to hear what is being done wrong and right than from the source. Whomever your Affiliate chooses, elects, or appoints would be a welcome a well heard voice to glean direction from for future enhancements to ABANA. Please contact Peyton Anderson with your "Liaison" or questions: [peytonanderson@abana.org](mailto:peytonanderson@abana.org), 434-390-6203.

This is YOUR ABANA! Please consider getting involved to help in the pursuit of preservation and education of this wonderful craft! This "bridge" is a two way street! With better traffic we can all serve our collective members better.

Yours in Service,  
Peyton Anderson  
ABANA President  
Pro Tempore Public Relations Chairperson



## April Hammer-In

Saturday 14<sup>th</sup> 9:00 AM

Iron-in-the-hat  
Pot-luck lunch

Ken Roby  
11193 Taylor May Rd.  
Auburn, Ohio 44255  
440-543-4977

## May Hammer-In With PAABA

Saturday 19<sup>th</sup> 9:00 AM

Iron-in-the-hat  
Pot-luck lunch

Brad Weber  
88250 Mill Hill Rd.  
Bowerstown, Ohio 44695

## WRABA 2012 Conference—June 23 & 24

Burton Century Village

Featured Demonstrator: Bob Patrick—known for forge welding

June 23rd: Demonstrations 9AM-5PM, Bonfire

June 24th: Hands-on workshop 9AM-5PM

Advanced Registration:

Demonstrations (Saturday) \$25

Hands-on workshop (Sunday) \$25

Contact:

Bruce Woodward

6374 Lake Rd. West

Madison, Oh 44057

440-428-0822

*Woodwardiron1@roadrunner.com*



Bob Patrick

<http://www.ahilltopforge.com/index.html>

## July Joint Hammer-In and Picnic with NOB

Saturday 14<sup>th</sup> 9:00 AM

Iron-in-the-hat  
Pot-luck lunch

Ky Green  
5115 State Rt 60  
Wakeman, Ohio 44889

## Open Forge

Tuesdays 5:00—9:00 PM

Maple Leaf Forge  
(Ralph Neumeister)  
17231 Messenger Rd.  
Burton, Ohio 44021

Burton Century Village  
14653 East Park Street  
Burton, Ohio 44021

If you need a forge to use, help with a project, or just to learn something—come to one of the open forges.  
They will be returning to the Burton forge April 30th.

## Monkey Wrench Collar Tool

By Carl Davison

Wooden handled monkey wrenches, given a second handle in some fashion or other, have long been used by blacksmiths for twisting wrenches. The jaws are also sometimes rounded to be used as an adjustable bending fork. Below is another use for this old, too often cast away antique marvel.



Open the jaws to the thickness of what you plan to collar plus 2 times the thickness of the collar material.



With the registration stop set so your collar material is centered over the jaw opening, put the heated collar stock in place.



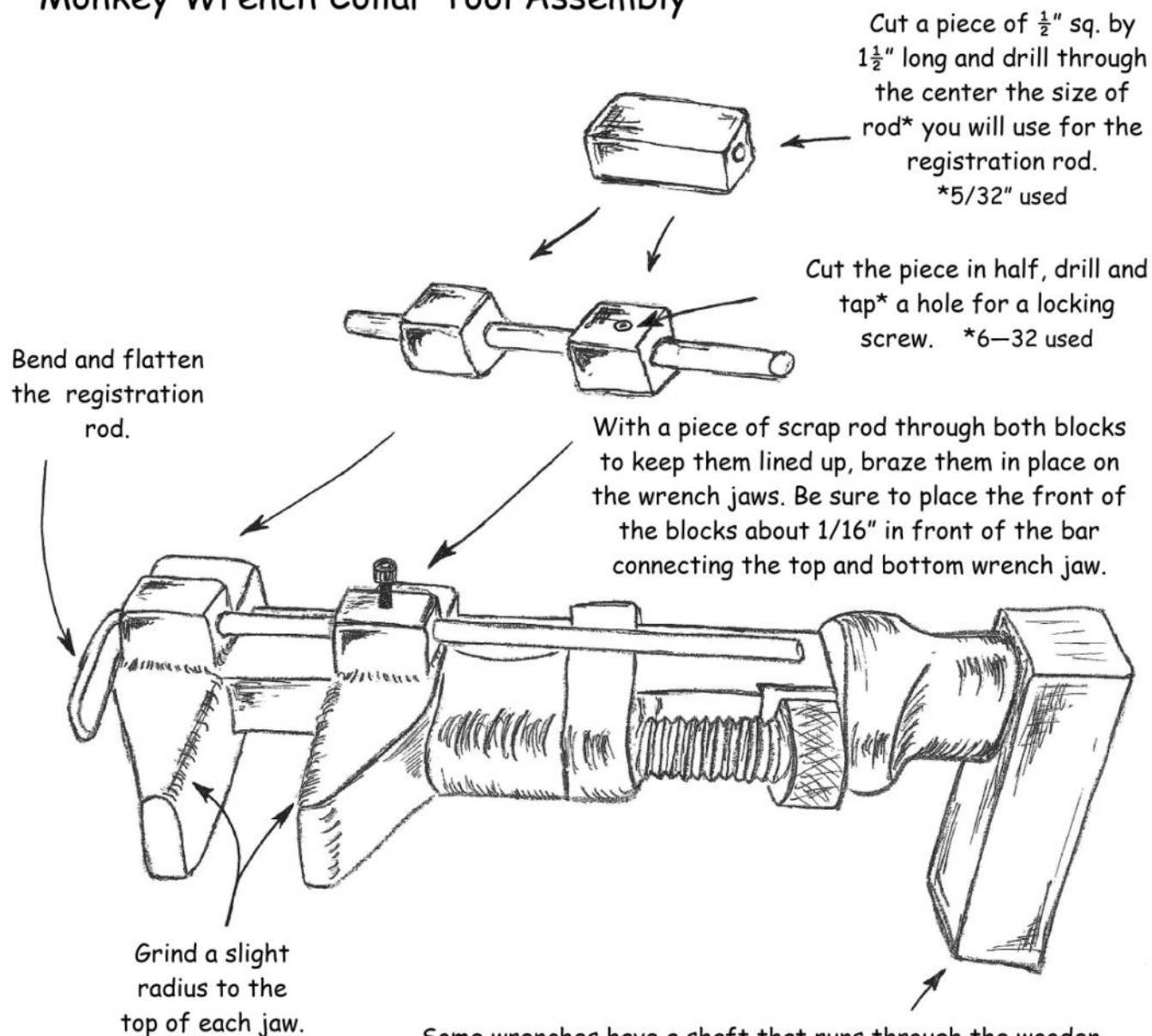
The squared punch must be the same width as your pieces to be collared.



Work quickly, "Strike while the iron is hot"



## Monkey Wrench Collar Tool Assembly



Shaft type handle wrench  
with wood removed

Some wrenches have a shaft that runs through the wooden handle. Unscrew or cut the bottom lock nut from the handle removing the wood to expose the shaft. To attach the hardy stock drill a hole through the top of the stock the size of the wrench shaft. Cut the wrench handle shaft leaving enough protruding through the hole in the hardy stem to be peened over like a rivet.

For wrenches that have a knife handle remove the wood from the handle. Weld the hardy stem onto the wrench and cut off the excess handle metal.



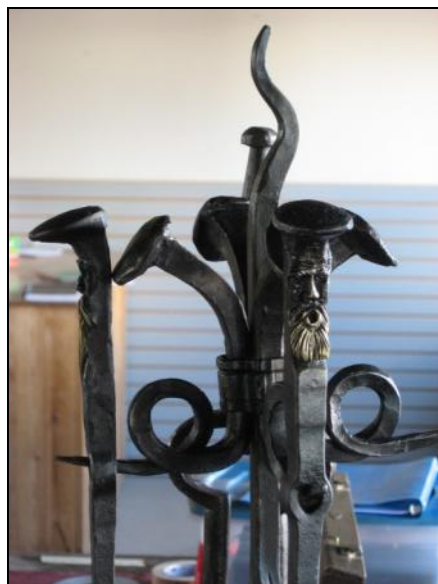
## February Hammer-In by Bob Temple

The hammer-in at Rodger Howards Forge on Feb. 12, 2012 was attended by nine stalwart members. Snow was everywhere Sunday morning and the roads were "slippery as a mountain pass on a snowy day". Roy Troutman demoed a large strap hinge with some problems involving tools. He did a masterful job with assistance from Rocky Whitfield. This job is more difficult than one would imagine. We that were observing determined that this type of hinge should cost in the area of "\$600" or more. The splitting of the hinge parts in stead of hack sawing and chiseling out the center. is a bit more work. without a jig ( one is in the works at this very time). The second demo was by our host Rodger Howard. Starting with 2 16 inch pieces of bar stock made two bar shoes in record time. The shoes are formed and then forge welded at the heels to form the bar. It is a shoe used to support the hoof at the heal area.



## March Hammer-In at Bob Parks'

Roy Troutman made a rounding hammer with the help of various strikers and Bob Parks tending the forge



This fire place set was made by Waymond Rubel of Ironwood forge and was shown at the March Hammer-In



# Classifieds

ABANA has sent us 200 iron in the hat tickets for the 2012 conference. The items are:  
 Tire hammer by Mark & Mindy Gardner  
 BAM box with signature tools  
 NIMBA titan 120 lbs anvil  
 Tickets are \$1 each and will be available at all hammer-ins until next May.

Kiln board \$10  
 Gas forge parts and information  
 Electric Blower for Forge \$55  
 Early American Wrought Iron \$90  
 Backyard Blacksmith \$12  
**Ralph Neumeister 440-552-9560**



## WRABA Anvils

"WRABA" brass anvils are available.  
 They are 4" long and 2" tall.  
 Their cost is \$25.00  
 Get one at the next WRABA event.

Blacksmith helper 3/4 by 2 inch dies Member \$80 non member \$100

various die heat treated 4140 to rc50 \$55 member --\$65 non member

monkey tool set 4149 heat treated set of 5 --3/16-1/4--5/16--3/8--1/2 \$60 member \$75 non member

blacksmiths ruler \$20 member --\$25 non member

e-z weld 1# can \$14 member ---\$16 non member

**Ken Tucker 330-792-9722**



- Fabrication
- Welding
- Custom Signs
- Hitch Covers
- Metal Art
- Decrative Wall Hangings
- Fireplace Screens & Inserts

**Rodney & Matthew Hardy**  
 PH: (740) 498-4369  
 email: doublehmetalworks@gmail.com

We can cut any shape/signs/letters that need cut from steel. From a drawing, picture or computer file, or we will help with artwork.

We use a C & C Plasma cutting machine



## August 9<sup>th</sup> & 10<sup>th</sup> Call for Nature of Metal Entries

Next year, 2012, we have been invited to set up a special metal arts exhibit in the Westwood Nature Center. Anyone from surrounding blacksmith organizations are also welcome to participate.

This is a fantastic opportunity to let the public see what an artist blacksmith does, as well as an opportunity to sell some of our pieces. The pieces will be on display in the nature center from the end of August through October. You may choose whether you wish to put a price on the piece. If you choose to sell your work the sale will be handled through the Nature center which will take a 20% commission on the piece.

The only requirements are that the piece be at least 50% metal and nature related. We would like small and large pieces. The large pieces should be no larger than 4 ft Sq unless you contact Ralph to find out if an exception can be made. Small pieces will be displayed in a showcase.

Hopefully this will attract a lot of attention to this art form and to make it successful we also need volunteers at West Wood on August 9<sup>th</sup> from 10-5 and August and 10<sup>th</sup> from 12-7 to help check in the items as they are dropped off.

On August 21<sup>st</sup> to the 24<sup>th</sup> 2012, we need volunteers to help set up the display's in the building at West Wood. (No special skills needed-just willingness to help). Please let Ralph know if this is something you are able to help with.

On August 25<sup>th</sup>, 2012 from 2-4 there will be an artist reception. Wine and cheese will be served. This is a chance for the public to meet the artists. Everyone is invited to attend whether you are displaying pieces or not. Please bring family and friends. We would like to see a large turn-out from our organization in support of metal art.

## 2012 ABANA Conference in Rapid City, South Dakota



# July 18-21, 2012

Registration for the ABANA 2012 Conference is now open! Use this form or call 423-913-1022 to register. Full conference registration is \$225 for current ABANA members. Nonmember registration is \$275.

The ABANA 2012 Conference in South Dakota is a **"MUST-SEE"** event and will include:

Top Demonstrators	Business Card Exchange	Saturday Evening Dinner
Lectures & Workshops	Portfolio Display Area	Tailgate Sales
3-Day Iron Smelt	Iron-in-the-Hat	Blacksmith Vendors
Poster Displays	Saturday Auction	Open-to-the-Public Gallery
	Family Programs	

### Teaching Tent

The ABANA Education Tent will be staffed by Mark Aspery, Gerald Boggs, and Darryl Nelson. Some of the teaching items are: tooling, two-dimensional animal heads, wizard-headed bottle opener, and ABANA's National Curriculum. To participate, check the schedule and select the class you want, attend the demo, and place your name in the hat at the Teaching Tent if you are interested. Winners' names will be drawn immediately after the demo, before class begins.

Don't forget to bring your personal safety equipment if you would like to participate!

### Bloomery Smelts

This is a MUST SEE! Wednesday will see the furnace constructed. Thursday will be the first smelt, forging a sculptural piece from part of the bloom. Friday is another smelt with demo on converting the iron to steel in a small hearth.



# Western Reserve Artist Blacksmith Association

6374 Lake Rd. W.  
Madison, Ohio  
44057



Send To:

**W  
R  
A  
B  
A**

Forwarding Address requested postage guaranteed

## "Tales of the Western Reserve"

### WRABA MEMBERSHIP APPLICATION

Name: \_\_\_\_\_  
Spouse's Name \_\_\_\_\_  
Address: \_\_\_\_\_  
City: \_\_\_\_\_ State: \_\_\_\_\_ Zip: \_\_\_\_\_  
Home Phone: \_\_\_\_\_  
E-mail: \_\_\_\_\_  
Forge Name: \_\_\_\_\_  
Occupation \_\_\_\_\_  
What areas of metalworking are you interested in? \_\_\_\_\_



Smithing:

Professional \_\_\_ Hobbyist \_\_\_ Beginner \_\_\_ Advanced \_\_\_

**Dues are payable by MARCH 1st. \$20. yearly single \$25. yearly family**

(new members prorated quarterly: March-May, June-August, Sept.- Nov. and Dec.-Feb.)

New membership \_\_\_\_\_ Renewal \_\_\_\_\_ Date \_\_\_\_\_

**Send application and dues to:**

**WRABA  
6374 Lake Rd. W.  
Madison, Ohio 44057**

**W  
R  
A  
B  
A**